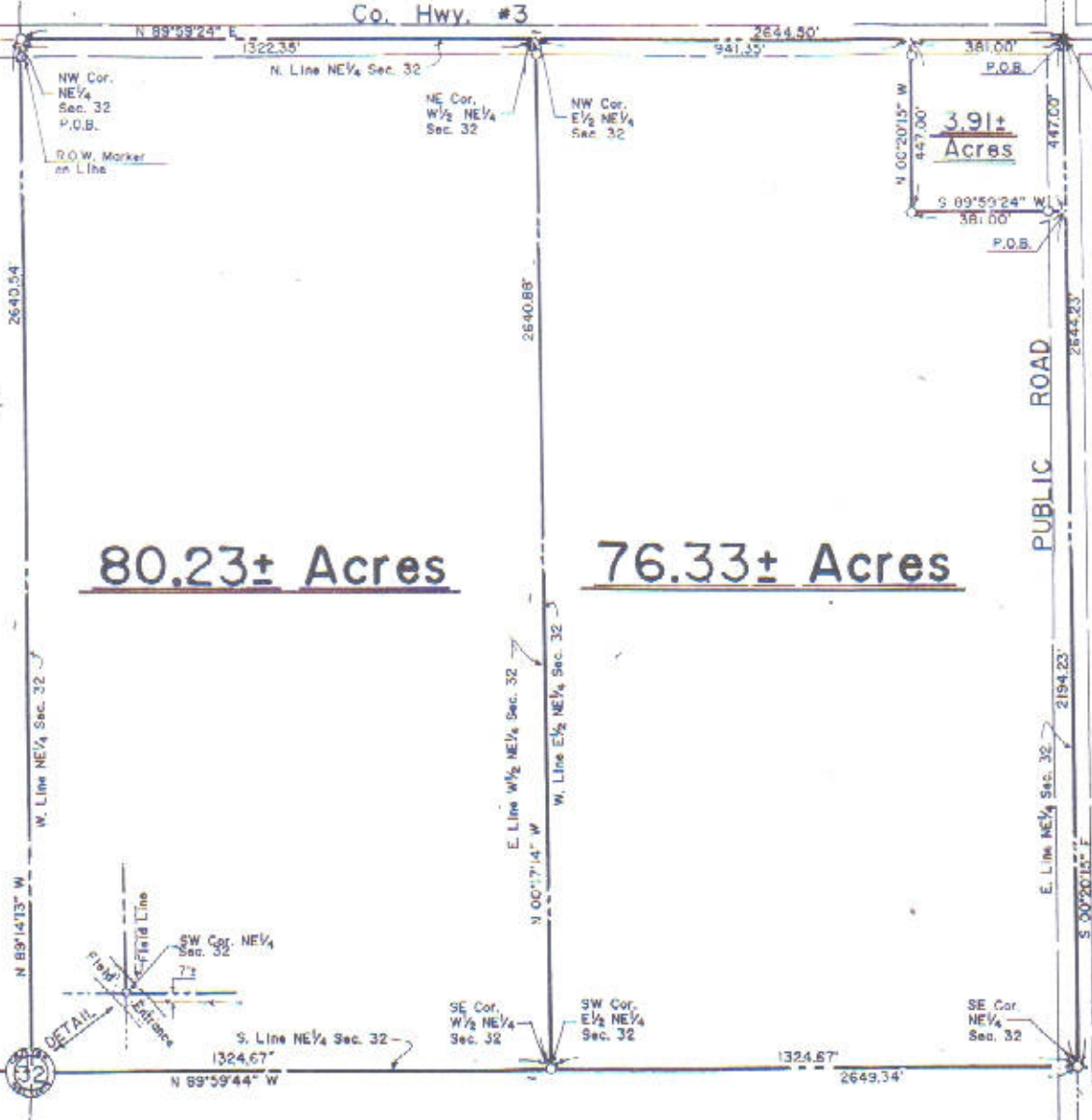


Co. Hwy. #3



80.23± Acres

76.33± Acres

3.91± Acres

- = Found
- = Found
- = Set 1/2
- = Set 1/4
- - - = Existing

STATE OF ILL.
COUNTY OF ST.

We, the W
hereby state
T12N, R7E of

We further
and correct
and that thi
current Illi

All distan
and bearings
Clear title
fence lines

All build
and adjacent
attempt has
to obtain or
depth, condi
or municipal

We further
in the Flood
Stark, on Co
December 21,

Dated this
Revised:~ Octo

#08284-001 "A"