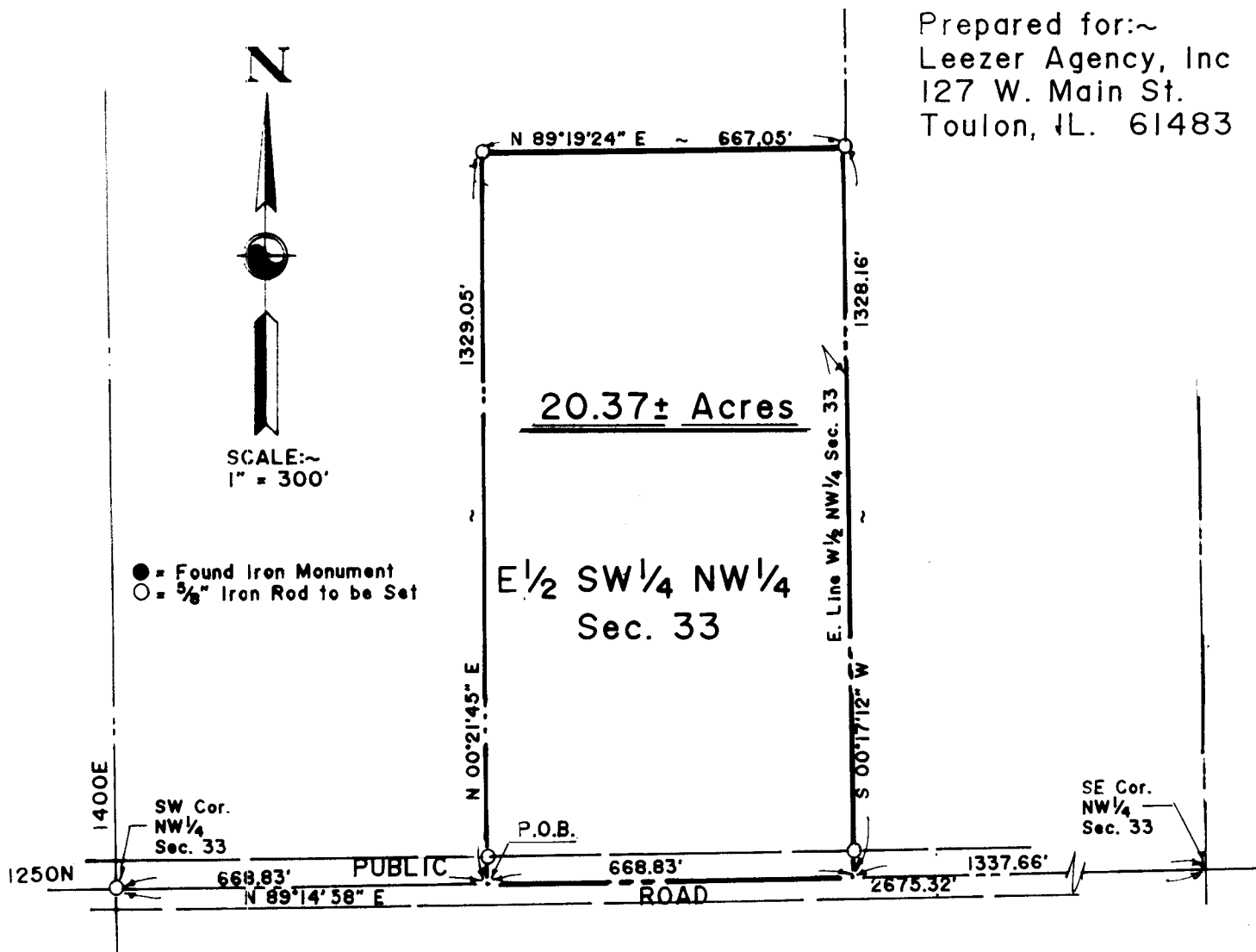


Prepared for:~  
 Leezer Agency, Inc  
 127 W. Main St.  
 Toulon, IL. 61483



SURVEYOR'S STATEMENT

STATE OF ILLINOIS) SS  
 COUNTY OF STARK )

We, the Wallace Engr. & Land Surveying Co., Inc., do hereby state that we have surveyed a part of the NW¼ of Section 33, T14N, R7E of the 4th P.M., Stark, County, Illinois.

We further state that the accompanying Plat is a true and correct representation of said Survey as made by us and that this professional service conforms to the current Illinois minimum standards for a boundary survey. All distances are given in feet and decimals of foot and bearings are for the purpose of description only.

All buildings, surface and subsurface improvements, on and adjacent to the site are not necessarily shown. No attempt has been made, as a part of this boundary survey, to obtain or show data concerning the existence, size, depth, condition, capacity or location of any utilities or municipal/public service facilities.

