

SURVEYOR'S STATEMENT

STATE OF ILLINOIS) SS  
 COUNTY OF STARK )

We, the Wallace Engr. & Land Surveying Co., Inc., do hereby state that we have surveyed a part the SW $\frac{1}{4}$  of Section 6 and also a part of the NW $\frac{1}{4}$  of Section 7, all in T13N-R7E of the 4th P.M., Stark, County, Illinois.

We further state that the accompanying plat is a true and correct representation of said Survey as made by us and that this professional service conforms to the current Illinois minimum standards for a boundary survey. All distances are given in feet and decimals of foot and bearings are for the purpose of description only. Distances shown in brackets are of record and as measured.

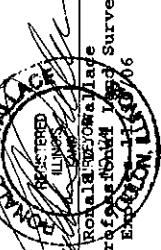
All buildings, surface and subsurface improvements, on and adjacent to the site are not necessarily shown. No attempt has been made, as a part of this boundary survey, to obtain or show data concerning the existence, size, depth, condition, capacity or location of any utilities or municipal/public service facilities.

We further state that no part of this property is located in Flood Hazard Area, as indicated for the County of Stark on Community Panel #170613 Map 13, dated 12/21/84.

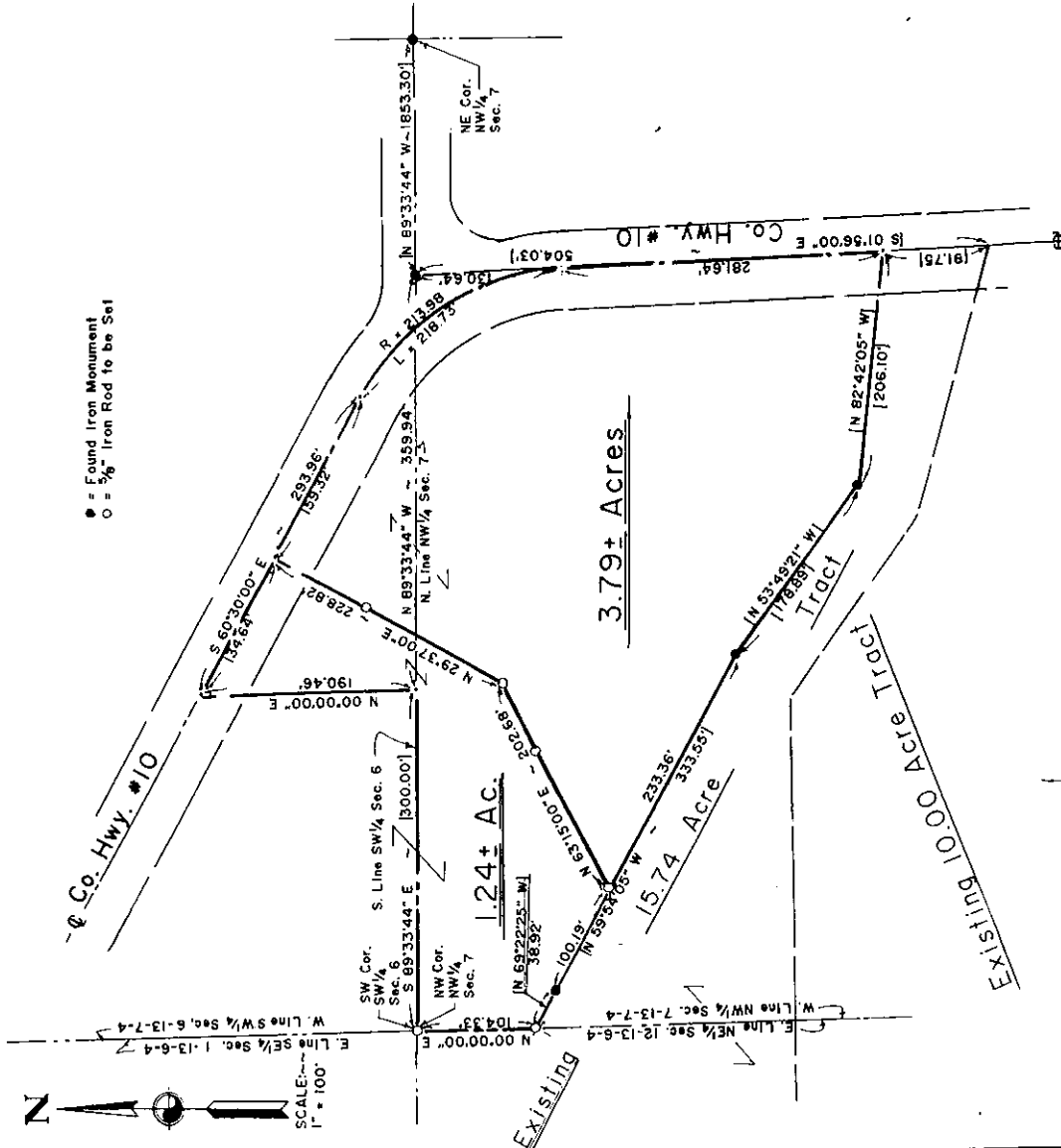
Dated this 19th day of August, 2006.

WALLACE ENGR. & LAND SURVEYING CO., INC.

Town of O. W. Illinois



By: *[Signature]*  
 Illinois Professional Land Surveyor #1741



#05367-002